



# Instruction Manual

## Alfa Laval HTC (Hygienic Tank Connection)

Article no. 9614-0708-01  
First published: August 2012

ESE02261-EN4      2021-09

Original manual



The information herein is correct at the time of issue but may be subject to change without prior notice

<b>1. Safety</b> .....	<b>4</b>
1.1. Important information .....	4
1.2. Warning Signs .....	4
<b>2. General information</b> .....	<b>5</b>
2.1. Information on the Instruction manual .....	5
2.2. Target group .....	5
2.3. Limitation or liability .....	6
2.4. Intended use .....	6
2.5. Package content .....	6
2.6. How to contact Alfa Laval Kolding A/S .....	6
<b>3. Product identification</b> .....	<b>7</b>
3.1. Product identification .....	7
<b>4. Installation</b> .....	<b>8</b>
4.1. Mounting and safety instructions .....	8
4.2. Welding recommendations .....	9
4.3. Mounting instrumentation .....	10
4.4. Storage .....	10
<b>5. Accessories</b> .....	<b>11</b>
5.1. Accessories .....	11

# 1 Safety

---

*Unsafe practices and other important information are emphasized in this manual. Warnings are emphasized by means of special signs.*

***Always read the manual before using the Alfa Laval HTC!***

---

## 1.1 Important information

---

The following safety terminology is used to indicate the hazard level:

### **WARNING**

Indicates that special procedures must be followed to avoid serious personal injury.

### **CAUTION**

Indicates that special procedures must be followed to avoid damage to the tank cleaning machine.

### **NOTE**

Indicates important information to simplify or clarify procedures.

---

This instruction manual is designed to provide the user with the information to perform tasks safely for all phases in the lifetime of the product supplied.

The user shall always read the safety section first. Hereafter the user can skip to the relevant section for the task to be carried out or for the information needed.

This is the complete manual for the supplied product.

---

## 1.2 Warning Signs

---

The following safety symbol is used to indicate the hazards level:

**General warning:**



### 2.1 Information on the Instruction manual

---

This instruction manual contains important information on proper usage and installation of the device. Read this instruction manual carefully before installing and mounting instrumentation into this process connection.

Adhere to the safety notes and operating instructions which are given in this instruction manual. Additionally applicable regulations regarding occupational safety, accident prevention as well as national installation standards and engineering rules must be complied with!

This instruction manual is part of the device, must be kept near its location, always accessible to all employees.

This instruction manual is copyrighted. The contents of this instruction manual reflect the version available at the time of printing. It has been issued to our best knowledge. However, errors may have occurred. Alfa Laval Kolding A/S is not liable for any incorrect statements and their effects.

- Technical modifications reserved -

#### NOTE

The illustrations and specifications contained in this manual were effective at the date of printing. However, as continuous improvements are our policy, we reserve the right to alter or modify any unit specification on any product without prior notice or any obligation.

---

### 2.2 Target group

---



#### WARNING

To avoid operator hazards and damages of the device, the following instructions have to be worked out by qualified technical personnel.

---

## 2 General information

---

### 2.3 Limitation or liability

---

By non-observance of the instruction manual, inappropriate use, modification or damage, no liability is assumed and warranty claims will be excluded.

---

### 2.4 Intended use

---

The Alfa Laval Hygienic Tank Connection 9614-0708-01 has been developed for being welded into vessels and tanks and having instrumentation installed that has a correct opposing process connection. It is the operator's responsibility to check and verify the suitability of the device for the intended application. If any doubts remain, please contact out local Alfa Laval Company in order to ensure proper usage. Alfa Laval Kolding A/S is not liable for any incorrect selections and their effects.

Permissible media are gases and liquids that are compatible with the media wetted parts.

---

### 2.5 Package content

---

Please verify that all listed parts are undamaged included in the delivery and check for consistency specified in our order:

- Hygienic Tank Connection
  - Instruction manual including mounting instruction
- 

### 2.6 How to contact Alfa Laval Kolding A/S

---

For further information please feel free to contact:

**Alfa Laval Kolding A/S**

31, Albuen - DK 6000 Kolding - Denmark

Registration number: 30938011

Tel switchboard: +45 79 32 22 00 - Fax switchboard: +45 79 32 25 80

[www.alfalaval.dk](http://www.alfalaval.dk) - [info.dk@alfalaval.com](mailto:info.dk@alfalaval.com)

---

Contact details for all countries are continually updated on our websites.

---

### 3.1 Product identification

---

The device can be identified by the markings on the de-vice. It provides the most important data. By serial number (s/n) or ordering code the product can be clearly identified.

**Hygienic Tank Connection**

**s/n.: yyyy-xxxxxx**

Alfa Laval. DK-Kolding, Albuen 31

4517-0001

---

## 4 Installation

---

### 4.1 Mounting and safety instructions

---



**WARNING**

Install the device only when depressurized and temperature less condition.



**WARNING**

This device may only be installed by qualified technical personnel who has read and understood the instruction manual!

**CAUTION**

Leak detection hole shall be positioned at the lowest point.

---



## 4.2 Welding recommendations

### NOTE

Always allow flange to cool after each side is welded

Flange diameter:  $\varnothing 98 \pm 0.2$  mm  
 Flange thickness at welding zone: 6 mm

### Step 1

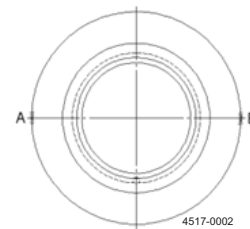
Align the inside of the device with the inside of the tank wall.

### Step 2

Turn the device into an orientation where the leakage hole is pointing downwards (if mounted on non-horizontal wall).

### Step 3

Spot weld at A and B.

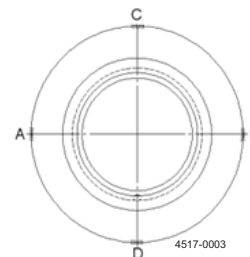


### Step 4

Adjust alignment with inner tank wall.

### Step 5

Spot weld at C and D.



### Step 6

Weld the device completely by continuously weld one quarter at a time and opposing quarters each time.



### Step 7

Finish by grinding and polish the inside to be flush with the tank wall.

To ensure a hygienic weld it is recommended to either use shielding gas or pre-treat the welding zone to remove any discoloration.

## 4 Installation

---

### 4.3 Mounting instrumentation

---

This process connection carries the EHEDG symbol and is authorised to carry the 3-A symbol. Both symbols are only valid when appropriate instrumentation connections are used together with this process connection. The instrumentation connection that fits this process connection is the Alfa Laval HTC connection, male part. For other instrument connections contact your local Alfa Laval office for support.

#### Step 1

Ensure that the instrument connection is an Alfa Laval HTC connection.

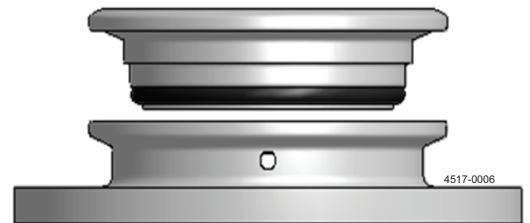
#### Step 2

2 Mount the O-ring gasket (Item number 9611-99-4285) that fits the instrument connections (or blind cap) O-ring groove.



#### Step 3

3 Insert the instrument (or blind cap) into the process connection.



#### Step 4

4 Put the clamp (Item number 9612-93-9303) around the assembly point and tighten the bolt for applying pressure until metal-to-metal contact in the connection.



### 4.4 Storage

---

Ideally, as a guideline Alfa Laval recommend:

- Store product as supplied in original packaging
-

### 5.1 Accessories

---

O-ring <sup>1)</sup>	Alfa Laval Item number 9611-99-4285
Blind cap	Alfa Laval Item number 9613-13-0102
Clamp	Alfa Laval Item number 9612-93-9303

<sup>1)</sup> Spare part that is included with the instrumentation. For Blind cap it must be ordered separately.

---

**How to contact Alfa Laval**

Contact details for all countries are continually updated on our website.

Please visit [www.alfalaval.com](http://www.alfalaval.com) to access the information directly.

© Alfa Laval Corporate AB

This document and its contents is owned by Alfa Laval Corporate AB and protected by laws governing intellectual property and thereto related rights. It is the responsibility of the user of this document to comply with all applicable intellectual property laws. Without limiting any rights related to this document, no part of this document may be copied, reproduced or transmitted in any form or by any means (electronic, mechanical, photocopying, recording, or otherwise), or for any purpose, without the expressed permission of Alfa Laval Corporate AB. Alfa Laval Corporate AB will enforce its rights related to this document to the fullest extent of the law, including the seeking of criminal prosecution.