



## Spare Parts

### Alfa Laval IM 10 Rotary Jet Mixer



EPS00207-EN7 2017-06

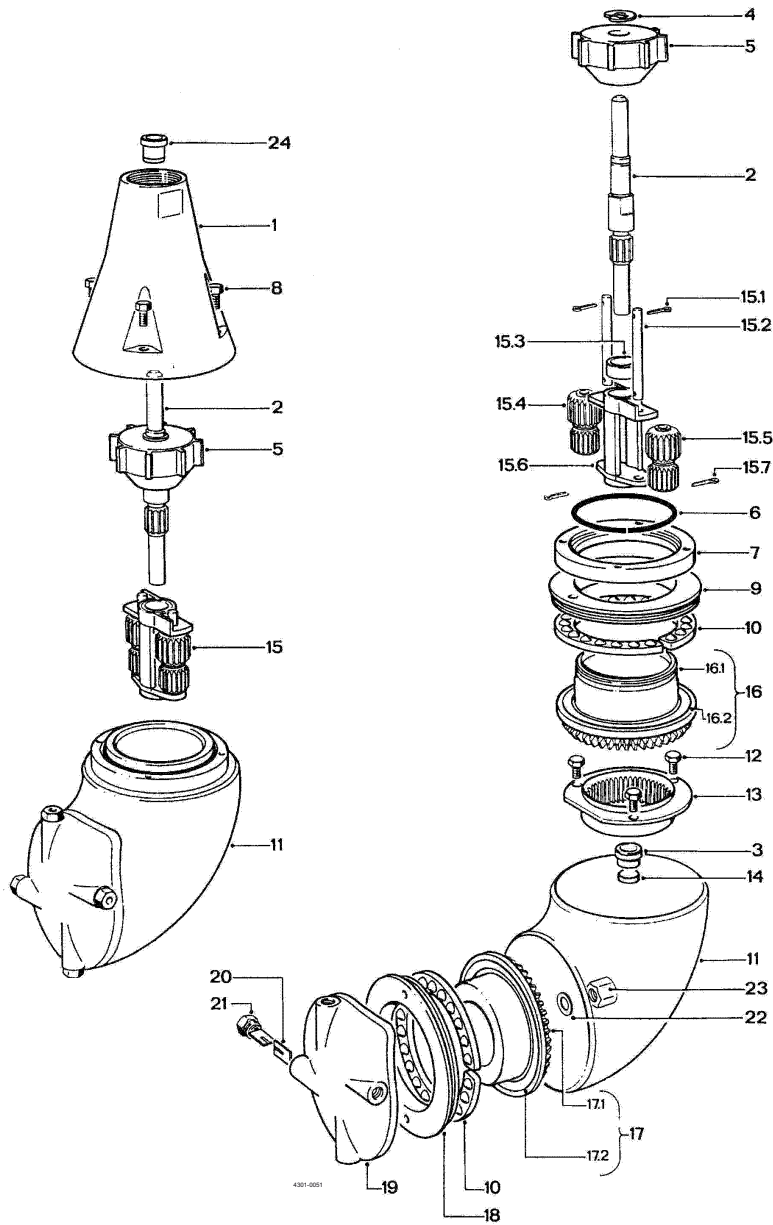
Original manual



---

*The information herein is correct at the time of issue but may be subject to change without prior notice*

<b>1. Alfa Laval IM 10 Rotary Jet Mixer</b>	
<b>Part drawing, part list, service kits and tools .....</b>	<b>4</b>



**Alfa Laval IM 10 Rotary Jet Mixer**  
**Part drawing, part list, service kits and tools**

Pos	Qty	Denomination	Article no.	Material	Remarks
1	1	Cone 1" BSP .....	TE20G508	Stainless steel	Spare part
2	1	Turbine shaft .....	TE30B511	Stainless steel	Spare part
3	♦	Bearing for turbine shaft (body) .....	TE20G640	Polymer	Wear part
4	1	Circlip RS 10, DIN 6799 .....	TE51C201	Stainless steel	Spare part
5	□	Impeller, (ø3.5/3.9 mm nozzle) .....	TE20G553	Polymer	Spare part
	□	Impeller, (ø4.5/4.6 mm nozzle) .....	TE20G554	Polymer	Spare part
	□	Impeller, (ø5,5 mm nozzle) .....	TE20G555	Polymer	Spare part
6	1	Retainer spring .....	TE20G565	Stainless steel	Spare part
7	1	Retaining ring .....	TE20G563	Stainless steel	Spare part
8	4	Screw .....	TE51A172	Stainless steel	Spare part
9	♦	Stem nut with ball race .....	TE20G571	Stainless steel	Wear part
10	♦	Ball retainer with balls .....	TE30B302	PFA/Stainless steel	Wear part
11	1	Body .....		Stainless steel	*Note
12	3	Screw .....	TE51A170	Stainless steel	Spare part
13	1	Internal gear .....	TE20G525	Stainless steel	Spare part
14	♦	Slide bearing .....	TE20G641	Polymer	Wear part
15	1	Planet complete .....	TE30B307	Assembly	Spare part
15.1♦	2	Cotter pin .....	TE51C102	Stainless steel	Spare part
15.2	2	Shaft for Planet wheel .....	TE30B514	Stainless steel	Spare part
15.3♦	1	Bearing for Planet wheel carrier .....	TE20G642	Polymer	Wear part
15.4♦	1	Planet wheel I .....	TE20G643	Polymer	Wear part
15.5♦	1	Planet wheel II .....	TE20G644	Polymer	Wear part
15.6	1	Planet gear carrier .....	TE20G530	Stainless steel	Spare part
15.7	2	Cotter pin (=15.1) .....	TE51C102	Stainless steel	Spare part
16	1	Stem complete .....	TE20G319	Stainless steel	Spare part
16.1	1	Stem .....	TE20G624	Stainless steel	Spare part
16.2♦	1	Ball race .....	TE20G574	Stainless steel	Wear part
17	1	Hub complete .....	TE20G320	Stainless steel	Spare part
17.1	1	Hub .....	TE20G625	Stainless steel	Spare part
17.2	1	Ball race (= pos. 16.2) .....	TE20G574	Stainless steel	Wear part
18	♦	Hub nut with ball race .....	TE20G573	Stainless steel	Wear part
19	□	Hub cover with pin .....		Stainless steel	**Note
	□	Hub cover with vanes and logo .....	TE20G620	Stainless steel	Spare part
20	8	Nozzle vane .....	TE20G594	Stainless steel	Spare part
21	□	Nozzle, ø3.9 mm .....	TE20G608	Stainless steel	Spare part
	□	Nozzle, ø4.6 mm .....	TE20G609	Stainless steel	Spare part
	□	Nozzle, ø5.5 mm .....	TE20G605	Stainless steel	Spare part
22	♦	Washer, USIT .....	TE20G584	Stainless steel/elastomer	Spare part
23	1	Cap nut .....	TE51A521	Stainless steel	Spare part
24	♦	Bearing for turbine shaft (cone) .....	TE20G548	Polymer	Wear part

\*\*Note pos. 19: For machine maintenance/repair, please order item no. TE20G390.

\*Note: Pos. 11 is not sold as single Spare part component but only as part of a machine maintenance/repair order. For further information please contact Alfa Laval Customer Support.

□ Configuration according to delivery note/order.

**Service kit**

♦ **Service kit for Alfa Laval IM 10 .....** TE30B292

Parts marked with ♦ are included in the Service Kit for Alfa Laval IM 10: TE30B292

**Alfa Laval IM 10 Rotary Jet Mixer**  
**Part drawing, part list, service kits and tools**

---

Pos	Qty	Denomination	Item no.
		Tools .....	
		Standard Tool Kit for Alfa Laval IM 10 Rotary Jet Mixer .....	TE81B085
		Consisting of: .....	
	-	5 mm caliper .....	TE369
	-	8 mm socket wrench with pin .....	TE462A
	-	Spanner, 36 mm .....	TE81B040
	-	Spanner, 12/13 mm .....	TE81B041
		Additional tool available on request .....	
		Fixture tool kit for body .....	TE20J386



**How to contact Alfa Laval**

Contact details for all countries are continually updated on our website.

Please visit [www.alfalaval.com](http://www.alfalaval.com) to access the information directly.

© Alfa Laval Corporate AB

This document and its contents is owned by Alfa Laval Corporate AB and protected by laws governing intellectual property and thereto related rights. It is the responsibility of the user of this document to comply with all applicable intellectual property laws. Without limiting any rights related to this document, no part of this document may be copied, reproduced or transmitted in any form or by any means (electronic, mechanical, photocopying, recording, or otherwise), or for any purpose, without the expressed permission of Alfa Laval Corporate AB. Alfa Laval Corporate AB will enforce its rights related to this document to the fullest extent of the law, including the seeking of criminal prosecution.